



Continuous Flow Natural Hot Spring  
Outdoor Hot Spring Bath with View of Steam Locomotive



Hot Spring

## Kawane Onsen has one of the largest hot water flow rates of any onsen in Shizuoka.

Kawane Onsen in Shizuoka Prefecture is well known for its abundant water flow. 730 liters of water overflows from the bath each minute. Many women are attracted to the very fine water which penetrates into the skin and is thought to aid in keeping the skin moist. We hope you enjoy our eleven different baths that are continuously overflowing with fresh natural hot spring water.

## Bath zone



### How to Take a Bath

- 1 Use the toilet before entering the bath.
- 2 Take off all articles of clothing in the changing room before entering the bathing area. (You cannot get into the bath with a towel or while wearing underwear.)
- 3 Leave the large towel in the changing room and only take the smaller towel with you into the bathing area.
- 4 Before entering the bath, take a shower starting with washing your feet and hands first followed by washing your body.
- 5 Wash your body using body soap and then rinse thoroughly prior to entering into the bath.

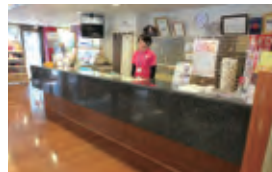
### Entrance procedure (bath zone)



- 1 Buy a bathing ticket from a vending machine at the entrance.



- 2 Remove your shoes at the lower level and place them into an open locker. Lock.



- 3 Hand the ticket to one of the staff at the front.



- 4 Obtain a tag from the staff.



- 5 Hand the tag to one of the staff at the watch stand and proceed to the changing room.

### Rules for taking a bath

- ※Do not take small towels with you into the bathtub.
- ※Do not pull out the plug and drain the water.
- ※Be considerate not to splash others while taking a shower.
- ※If you have long hair, put your hair up or bind it with something such as a rubber band so that your hair does not get into the bathtub.
- ※After use, return wash basins and stools to their proper original location.
- ※After taking a bath, dry your body lightly with the small towel in the bathing area before proceeding to the changing room.
- ※Bathing is for relaxing only. Do not use the bath for any other purpose such as swimming.
- ※Do not bring any food or drinks into the facility due to regulations regarding food sanitation.
- ※Anyone with tattoos or tattoo stickers will not be allowed admission.

### Bathing fee

	Bath only	Bade Zone only	Both
Adult	¥ 520	¥ 730	¥ 1,040
Children (elementary school children)	¥ 310	¥ 310	¥ 520

### Rental items and prices

- bath towel ¥ 220
- bathrobe with a bath towel ¥ 320
- Men's bathing suits (adults and children) ¥ 320
- Women's bathing suits (adults and children) ¥ 420

### Items for sale

- towel ¥ 320

※Bade Zone is an area where people are required to wear swimming suits to enter the hot spring bath and swimming pool.







Hot Spring

## Facility Map



## Dining Zone

Dine on meals prepared from fresh, locally harvested ingredients.

### 1F Dining area (free rest area)



Dining area (free rest area)

This is a large dining and free resting area measuring 80 tatami mats in size. Tuna on rice and green tea soba (buckwheat noodle) are recommended since Shizuoka is famous for green tea.



Tuna on rice



Green tea soba  
(buckwheat noodles)

## Gift Shop Zone

Take home a variety of homemade Japanese sweets and Kawane green tea etc.



Gift Shop



## Bade Zone\*

Swimsuit required

Enjoy the 20 meter swimming pool, various types of sauna and hot springs.



20 Meter  
Hot Spring Pool

## General Etiquette

- When you leave, do not take keys, hair dryers, pillows or any other equipment or items with you.
- Wear slippers in the toilet.
- Take off the slippers when leaving the toilet.
- Use the bathroom tissue provided for the toilet then discard it into the toilet bowl and flush. (Do not discard any paper other than the bathroom tissue provided into the toilet bowl). Be considerate of the next user and keep the toilet clean.
- Do not be loud in the facility or anywhere on the premise.
- Try not to bother other guests when using your cell phone and/or smartphone. The use of a cell phone and/or smartphone or the taking of photos or video in the bath zone and the bade zone\* is strictly prohibited.
- Place any trash only in designated trash cans.
- Do not spit on the premises.
- Smoke only in designated smoking areas.



## [Kawane Hot Spring] Refresh Zone surrounded by nature

### Have a great day with your family and friends!

This is an excellent place for people to refresh.

In addition to the outstanding natural hot spring there are accommodations at Fureai cottage, located in a large open field, and a roadside station shop as well.

Enjoy eating, leisure time and shopping.



## Shopping & Rest Zone

The roadside station has a shop where you can take a break from your drive and relax by shopping and resting

### Roadside Station Shop • Footbath



Building Exterior



Vegetables



Shiitake Mushrooms



Footbath

Locally grown tea products, fresh produce and shiitake mushrooms are sold here. A free footbath with natural hot spring water is available. Please stop by!

- Generally closed the first Tuesday of the month.
- Business hours 9:00 ~ 17:00 (Footbath 9:00 ~ 21:00)

### Address • Contact

〒428-0101 220 Sasamado, Kawane-cho, Shimada City, Shizuoka Prefecture

- Fureai no Izumi (no accommodation facility available) ..... ☎0547-53-4330
- Fureai Cottage (accommodation reservation required) ..... ☎0547-53-4110
- Roadside Station Shop ..... ☎0547-53-4340

Hours 9:00 ~ 21:00 (Roadside Station / 9:00~17:00)

<http://kawaneonsen.jp/> 川根温泉 検索

◎ Generally closed the first Tuesday of the month.  
Due to inspection, the facility is occasionally closed on consecutive days.  
※ Always open during the year-end and New Year holidays.  
※ Phone reservations are accepted until 5:00pm on days when closed.

### If you are coming in a group, please note the following:

- Inform us in advance if your group has 10 or more people.
- Groups are not allowed to occupy the facility except in paid private rooms.
- We decline large groups wishing to bathe or dine together due to priority given to individual guests.



## Steam Locomotive Observation Area

This is a destination visited by steam locomotive fans from all over Japan. You can see and hear the nostalgic sounds of impressive looking historic steam locomotives.

### Oigawa Railway (Steam Locomotive)

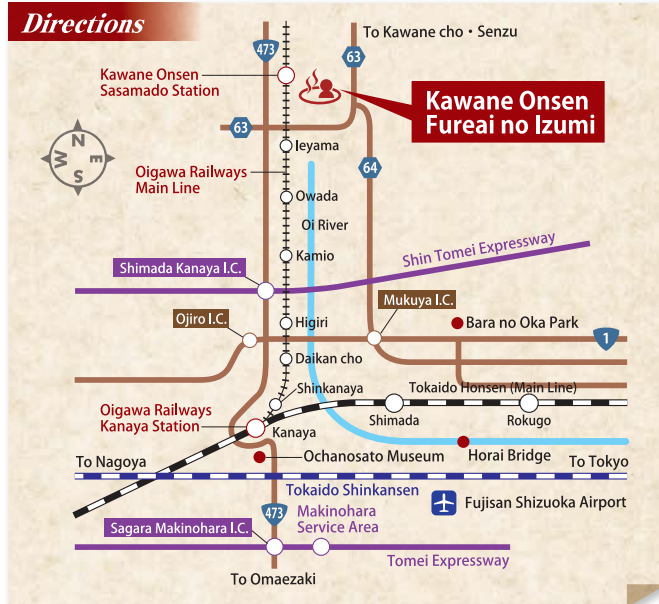
Kawane Hot Spring is proud to offer the rare sight of steam locomotives in operation. The sight of steam locomotives attracts tourists from all over Japan. The steam locomotive schedule including suspended service dates is subject to change depending upon the season. Inquire in advance.

- Oigawa Railways (direct) 0547-45-4111



The view from Kawane Hot Spring

### Directions



### By Train

Nagoya	72 min.	Kakegawa	15 min.	Kanaya	35 min.	Kawane Hot Spring Sasamado	5 min.	Kawane Hot Spring
	JR Tokaido Shinkansen		JR Tokaido Honsen (Main Line)		Oigawa Railways		On foot	
Tokyo	95 min.	Shizuoka	34 min.	Kanaya	35 min.	Kawane Hot Spring Sasamado	5 min.	Kawane Hot Spring
	JR Tokaido Shinkansen		JR Tokaido Honsen (Main Line)		Oigawa Railways		On foot	

### By Car

- From Mukuya I.C. on bypass Route 1 ..... approx. 25 min.
- From Shimada Kanaya I.C. on Shin-Tomei Expressway ..... approx. 25 min.
- From Sagara Makinohara I.C. on Tomei Expressway ..... approx. 1 hr.